

IMPORTANT SAFETY AND INSTALLATION INSTRUCTIONS

WARNING: Risk of fire and electrical shock. This product is to be installed by a qualified electrician only.

CAUTION: When using electrical equipment, basic safety precautions should always be followed including the following: Read all instructions carefully before installation and save

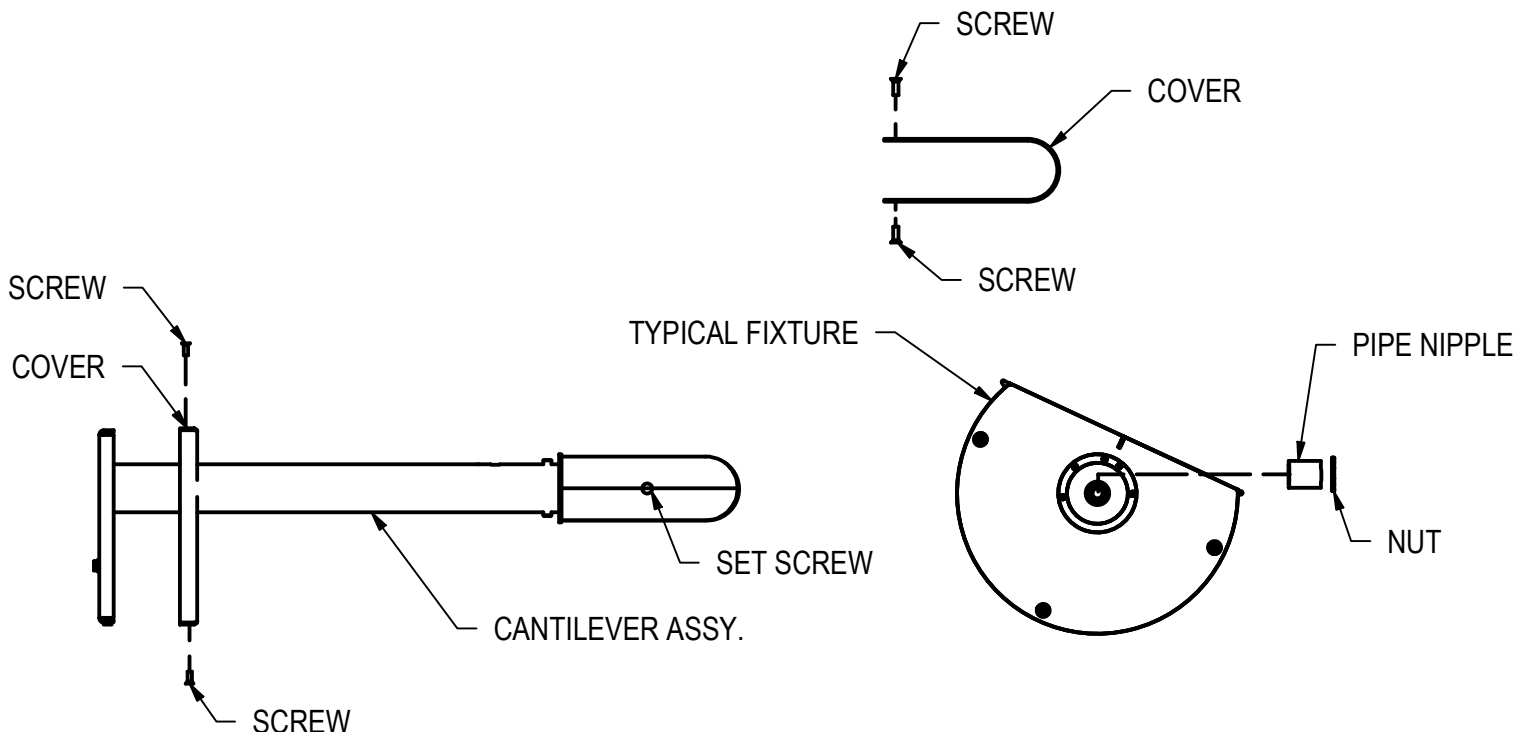
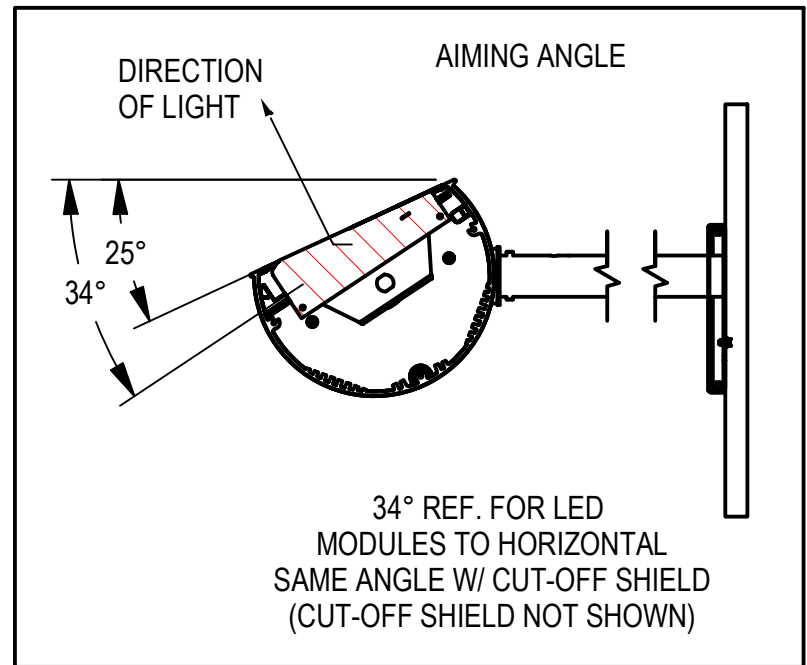
for future use. Make sure installation and all connections are in accordance with the National Electrical Code and any local regulations. To avoid possible electrical shock, be sure that the power supply is turned off before installing or servicing this fixture. Servicing should be performed by qualified service personnel.

These instructions do not claim to cover all details or variations. When additional information is desired, please contact your SPI representative.

HORIZONTAL CANTILEVER MOUNT ECHO

INSTALLATION:

1. REMOVE SCREWS FROM COVERS.
2. ATTACH CANTILEVER ASSEMBLY TO WALL OVER J-BOX (SCREWS BY OTHERS).
3. ATTACH FIXTURE TO HUBS WITH PIPE NIPPLES, LOCK WASHERS, AND NUTS PROVIDED.
4. MAKE WIRE CONNECTIONS AT HUB AND J-BOX LOCATIONS.
5. AIM FIXTURE AND LOCK IN PLACE WITH SET SCREW PROVIDED.
6. REATTACH BOTH COVERS WITH SCREWS.



4/14/23
IS110563X